

DEC 13 2019

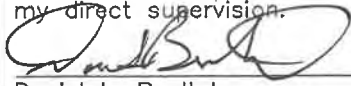
Corners to be Indexed

E1/4 20-107-42

STATE OF MINNESOTA, }
COUNTY OF MURRAY, } ss.

I hereby certify that the within instrument was filed in this office for record on the 13TH day of DECEMBER A.D. 20 19 at 9:00 o'clock A. M, and was duly recorded as Document No. -

I hereby certify that this document and the data contained herein was prepared by me or under my direct supervision.



Daniel L. Bueltel

License No. 43844

Aug. 14, 2019
Date

Coelwyn C. Larson
County Recorder

CERTIFICATE OF LOCATION OF GOVERNMENT CORNER

Land survey monuments situated in Section 20, Township 107, Range 42, 5TH P.M.

STATE OF MINNESOTA, County of MURRAY

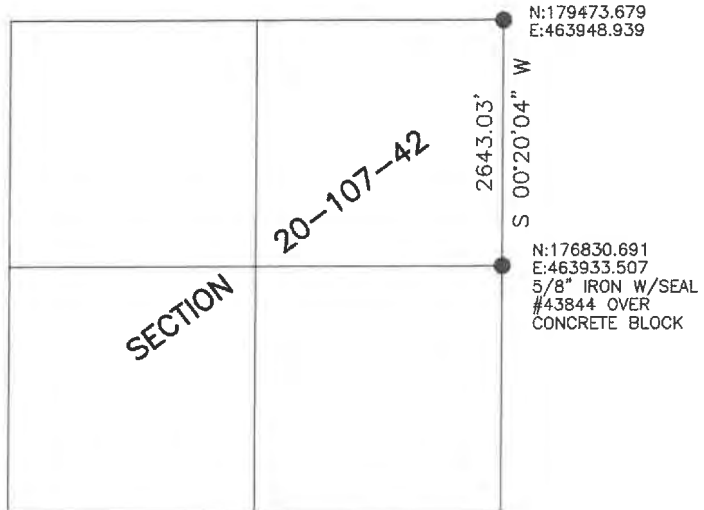
STATEMENT OF EVIDENCE:

1861 - Original Government Survey

1934 - Murray County Highway Department set concrete block at the corner.



- FOUND MONUMENT
- SET MONUMENT



Minnesota State Plane Coordinate
System Murray County Datum NAD83 (1996)

Statement of Evidence

E1/4 20-107-42

In 1861, L.G.M. Fletcher did the original subdivision of the township.

On June 9, 1906, J.W. Woolstiencroft indicated the corner was "33 feet directly east of corner tree, cottonwood."

In 1934, the Murray County Highway Department set a concrete block at the corner.

On August 1, 2019, Bueltel-Moseng Land Surveying dug with a backhoe and found a concrete block with a "X" on top.

On August 13, 2019, Bueltel-Moseng Land Surveying set a 5/8" iron with seal #43844 over the concrete block.